



**CITY DOCK ACTION COMMITTEE**

---

**TRANSFORMING  
CITY DOCK**

**ANNAPOLIS CITY COUNCIL**

---

**JANUARY 14, 2020**

# THANK YOU CDAAC TEAM!



## DESIGN & PLACEMAKING

**Bryce Turner**  
*Co-chair*

**Leo Wilson**  
*Co-chair*

**Michael Beatty**

**Brennan A. Murray**

**Ted Shields**

**Chris Schein**

**Jay Schwarz**

**Craig Martin**

**Michael Dowling**

**Jay Graham**

## MARITIME

**Tarry Lomax**  
*Co-chair*

**Susan Zellers**  
*Co-chair*

**Rod Jabin**

**Mary Ewenson**

**Gary Jobson**

**Alex Berg**

**Dick D'Amato**

**Marcellous Butler**

**Robert Crain**

## FINANCIAL TOOLS

**John Hammond, Chair**

**Larry Shubnell**

**Eliot Powell**

**Sean O'Neill**

**Jim O'Hare**

## RESILIENCY

**Zoe Johnson**  
*Co-chair*

**David Barker**  
*Co-chair*  
**Dan Nees**

**Elvia Thompson**

**Karl Schrass**

**Amy Clements**

**Haley Varner**

## COMMUNITY CHARACTER BENEFITS

**Honorable Richard Hillman,**  
*Co-chair*

**Mark Mhley**  
*Co-chair*

**Dr. Wil Scott**

**Carl Larkin, Secretary**

**Macarena Olson**

**Robert Worden,**

**Kate Stillwell**

**Claire Bowdren**

## PARKING, BIKE & PEDESTRIAN

**Ian Pfeiffer**  
*Chair*

**Alex Pline**

**Jeff Gemunder**

**Shelley Row**

**Rock Toews**

**Debbie Gosselin**

**Iain Banks**

**Tom Rekus**

**Ron Jarashow**  
*Special Advisor*

## THRIVING LOCAL BUSINESSES

**Mark Kleinschmidt**  
*Co-chair*

**Joe, Rubino**  
*Co-chair*

**Brendan Greeley**  
*Co-chair*

**James A. Reid**

**Jen & Jerry Donahoe**

**Melanie Murphy**

**Erik Evans**

**Joanna Young**

**Steve Samaras**

**Jeff Schaub**

**Steven Kahle**

**Zia Boccaccio**

**Tom Frank**

**Pete Chambliss**

## BURTIS HOUSE

**Rodney Little**  
*Chair*

**Karen Theimer Brown**

**Grant DeHart**

**Tom McCarthy**

**Louise Hayman**

**Jane Campbell-Chambliss**

## PROGRAMMING

**Connie Del Signore**  
*Chair*

**Carroll Hynson**

**Chris Haley**

**Cynthia Towle-Krewson**

**Honorable Ellen Moyer**

**Joann Vaughan**

**Kevin Brooks**

**Lyn Farrow**

**Margaret Davis**

**Page Reed Smith**

**Reverend Carletta Allen**

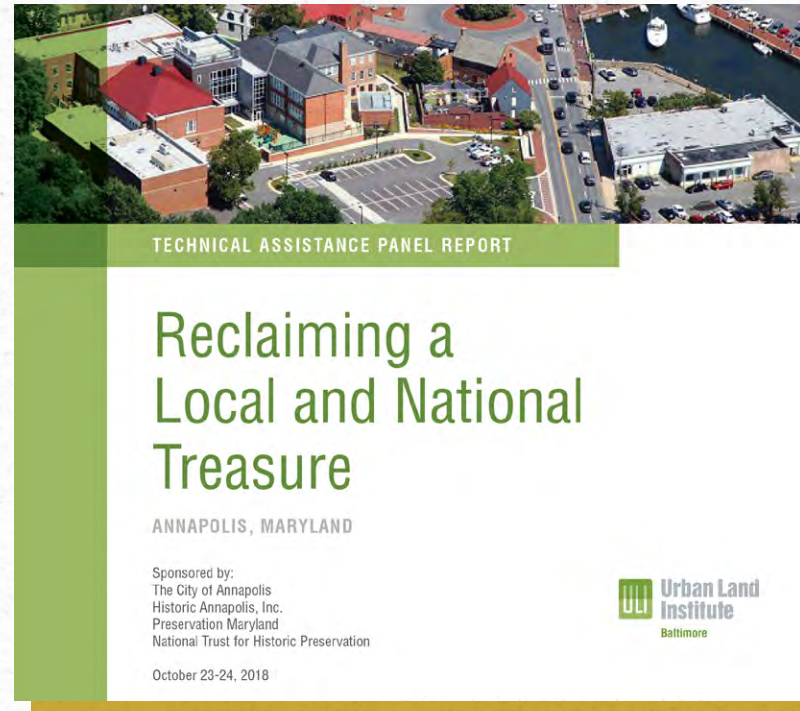
**Ronald Jarashow**  
*Special Advisor*



# TRANSFORMING CITY DOCK: CULMINATION



**PRIOR PLANS**



**URBAN LAND INSTITUTE**  
**'RECLAIMING A LOCAL AND NATIONAL TREASURE'**



**PARTNERSHIPS**



ANNE ARUNDEL  
COUNTY  
MARYLAND



*CALL TO  
ACTION: RISK  
IS EMINENT*

- ANNAPOLIS NO LONGER HAS THE LUXURY TO 'KICK THE CAN DOWN THE ROAD'
- TIME FOR ACTION IS NOW!

# *OPPORTUNITY TO EVOLVE AND THRIVE*



**1. REINVIGORATE  
MARYLAND'S STATE  
CAPITAL FOR THE 21ST  
CENTURY**

**2. CREATE A 'PROUD  
PLACE WITH PURPOSE'  
AT CITY DOCK**

**3. LAUNCH A  
NATIONAL  
PROTOTYPE**

**MAKE NO  
SMALL  
PLANS**

# CDAC PURPOSE

## CDAC GOALS

- Create Broad-Based Consensus for City Dock’s future
- Identify a Clear Path Forward for Action

## ‘PATH FORWARD’ - CDAC PROCESS

- 92 committed Annapolitans
- 9 Working Teams
- 8 months of intense effort





*CDAC EXTENSIVE  
COMMUNITY ENGAGEMENT*

.....

**20 OUTREACH MEETINGS**

- FIVE CITY DOCK ACTION COMMITTEE WORK SESSIONS
- SEVEN COMMUNITY/BUSINESS WORKSHOPS, INCLUDING THE MAY 6, 2019 WORKSHOP WITH 250 ATTENDEES
- FOUR COMMUNITY OUTREACH MEETINGS/PRESENTATIONS
- FOUR PUBLIC BRIEFINGS WITH THE PLANNING COMMISSION AND CITY COUNCIL

# *C D A C S T R A T E G I C* *A P P R O A C H*

## **CONFRONTING LONG-STANDING ISSUES**



- **RESOLVE THE THREAT FROM FLOODING**
- **ADDRESS PARKING/ACCESS**
- **SECURE HEALTH OF THE RESIDENTIAL COMMUNITY AND VIABILITY OF DOWNTOWN BUSINESSES**





# CONSENSUS PLAN



## CONSENSUS PLAN

.....

### DESIGN/PLACEMAKING TEAM INCORPORATED:

- COMMUNITY EXPECTATIONS
- AT THE DIRECTION OF CDAC WORK GROUPS



# NEXT STEPS

## PARTNERSHIP TO IMPLEMENT CITY DOCK



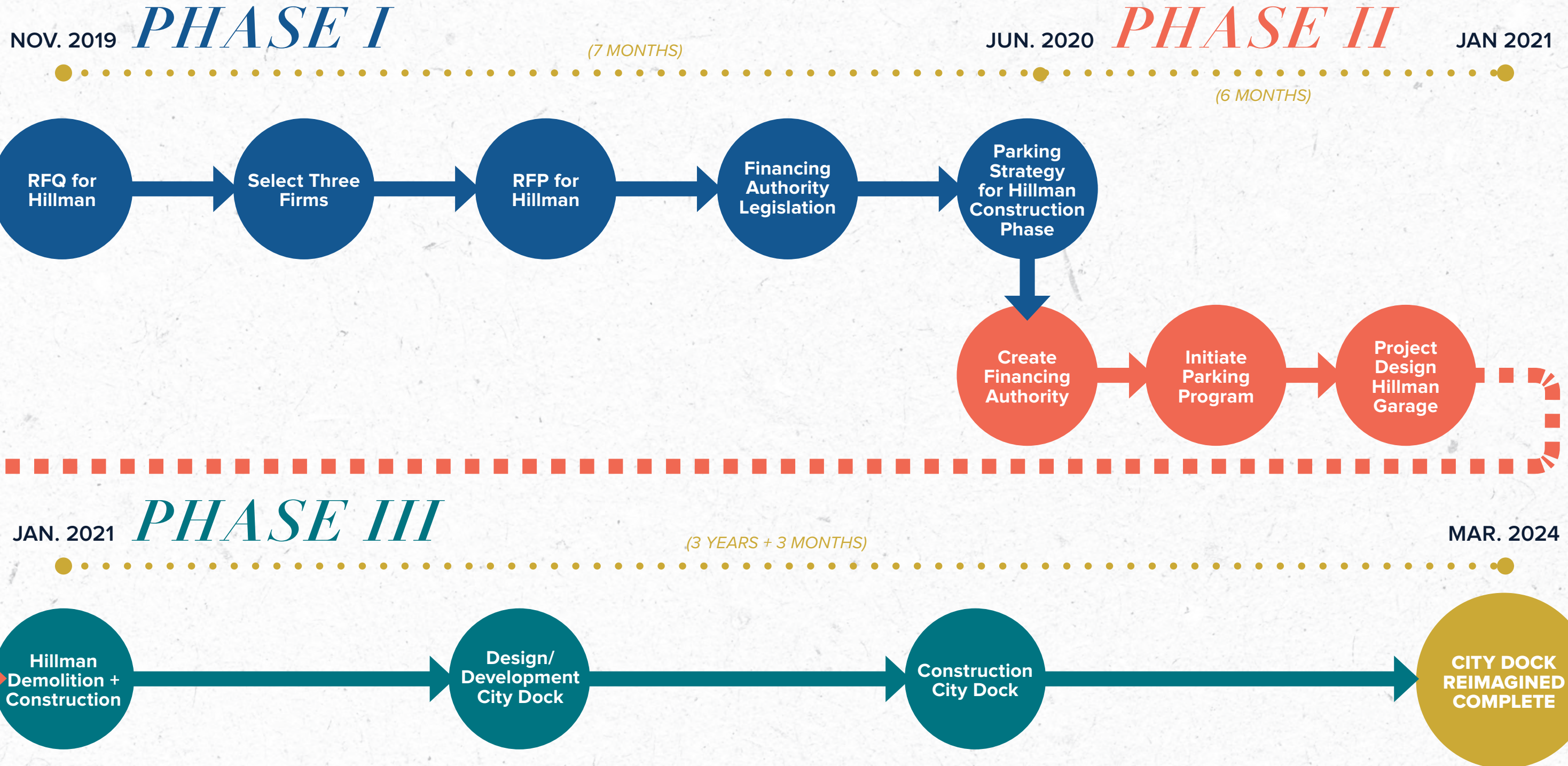
CITY ANNAPOLIS



ANNE ARUNDEL COUNTY  
(requesting funding from State)



HISTORIC ANNAPOLIS

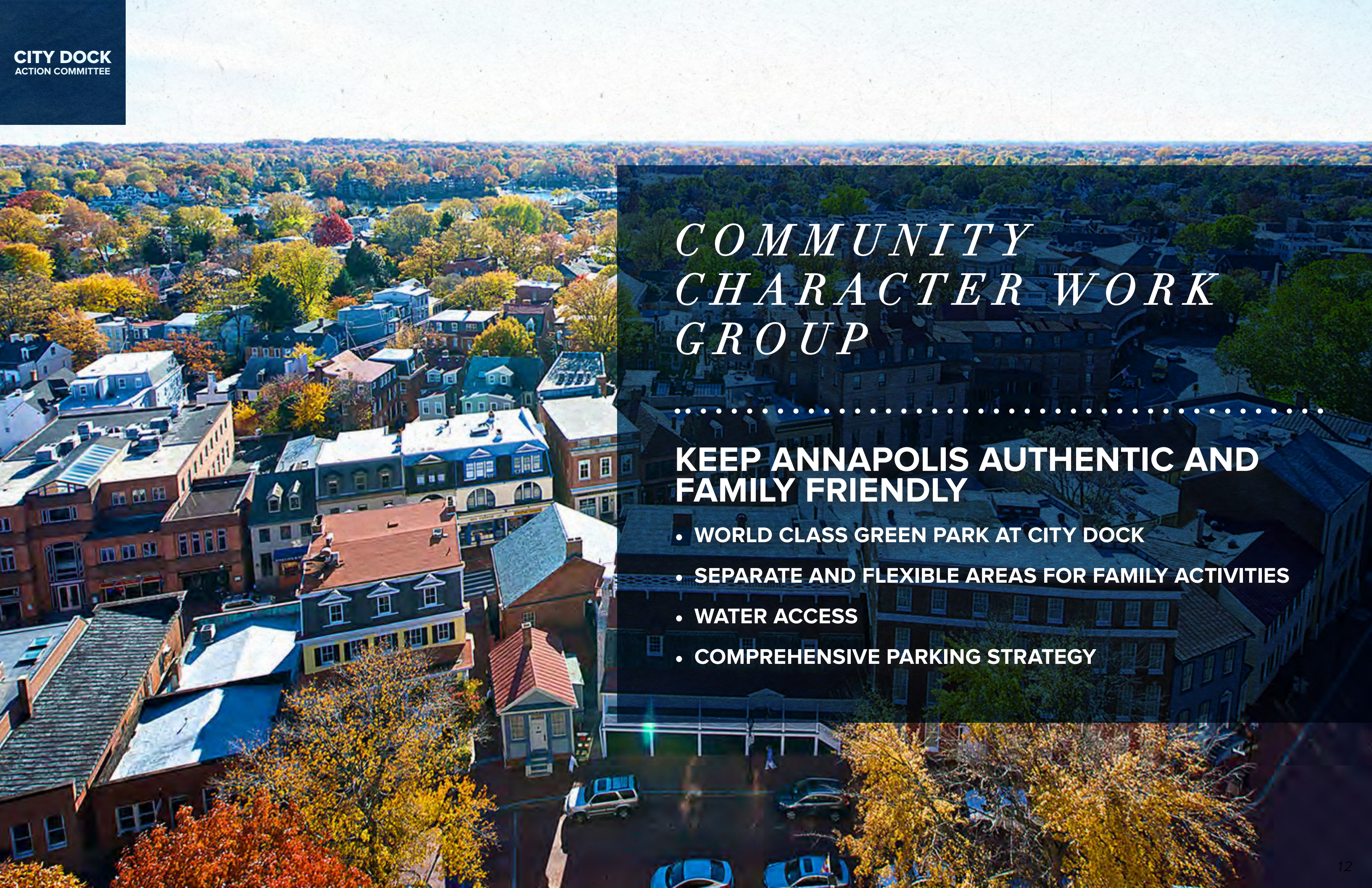


# WHY SUCCESS NOW?



**URGENCY**  
**MOMENTUM**  
**PARTNERSHIP**  
**FINANCING APPROACH**





*COMMUNITY  
CHARACTER WORK  
GROUP*

**KEEP ANNAPOLIS AUTHENTIC AND  
FAMILY FRIENDLY**

- WORLD CLASS GREEN PARK AT CITY DOCK
- SEPARATE AND FLEXIBLE AREAS FOR FAMILY ACTIVITIES
- WATER ACCESS
- COMPREHENSIVE PARKING STRATEGY



# *MARITIME WORK GROUP*

.....

## **SHARE THE MAGIC OF THE WATER**

- **CONTINUOUS WATER-FRONT PROMENADE**
- **BURTIS BASIN/DOCK DEVOTED TO ACTIVE USE OF BAY**
- **HISTORIC EDUCATIONAL OPPORTUNITIES**



# *RESILIENCY WORK GROUP*

.....

## **PRESERVE AND PROTECT DOWNTOWN**

- PROTECTION FROM FLOODING: GATE ZERO TO NEWMAN STREET
- INCORPORATES RAISED ELEVATIONS AND FLOOD DEVICES
- PERMANENT & DEPLOYABLE

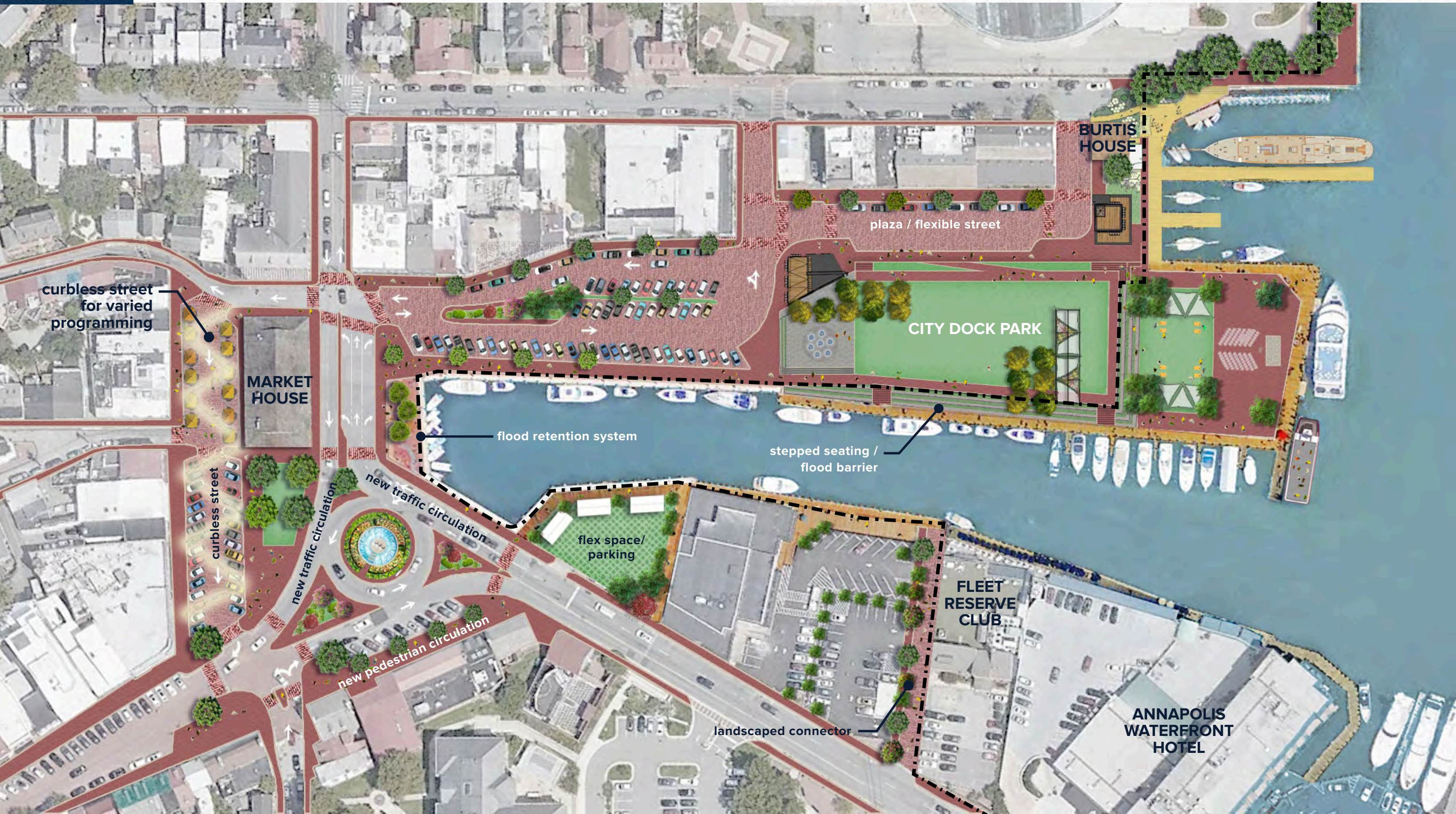


*C O N S E N S U S P L A N  
D E V E L O P M E N T*

**DESIGN & PLACEMAKING WORK GROUP**

# CITY DOCK TRANSFORMATION

## CONSENSUS PLAN DIAGRAM





# CITY DOCK TRANSFORMATION

## CONSENSUS PLAN DIAGRAM - PARKING DIAGRAM



**MARKET HOUSE**  
51 spaces

**MARKET SPACE**  
estimated 23,800 sf

68 spaces, 1 bus space

10 spaces, 3 bus spaces

**DOCK STREET PLAZA**  
estimated 13,300 sf

**CITY DOCK PARK**  
estimated 68,400 sf

**COMPROMISE LOT**  
estimated 10,500 sf

22 spaces

50 spaces

**FLEET RESERVE CLUB**

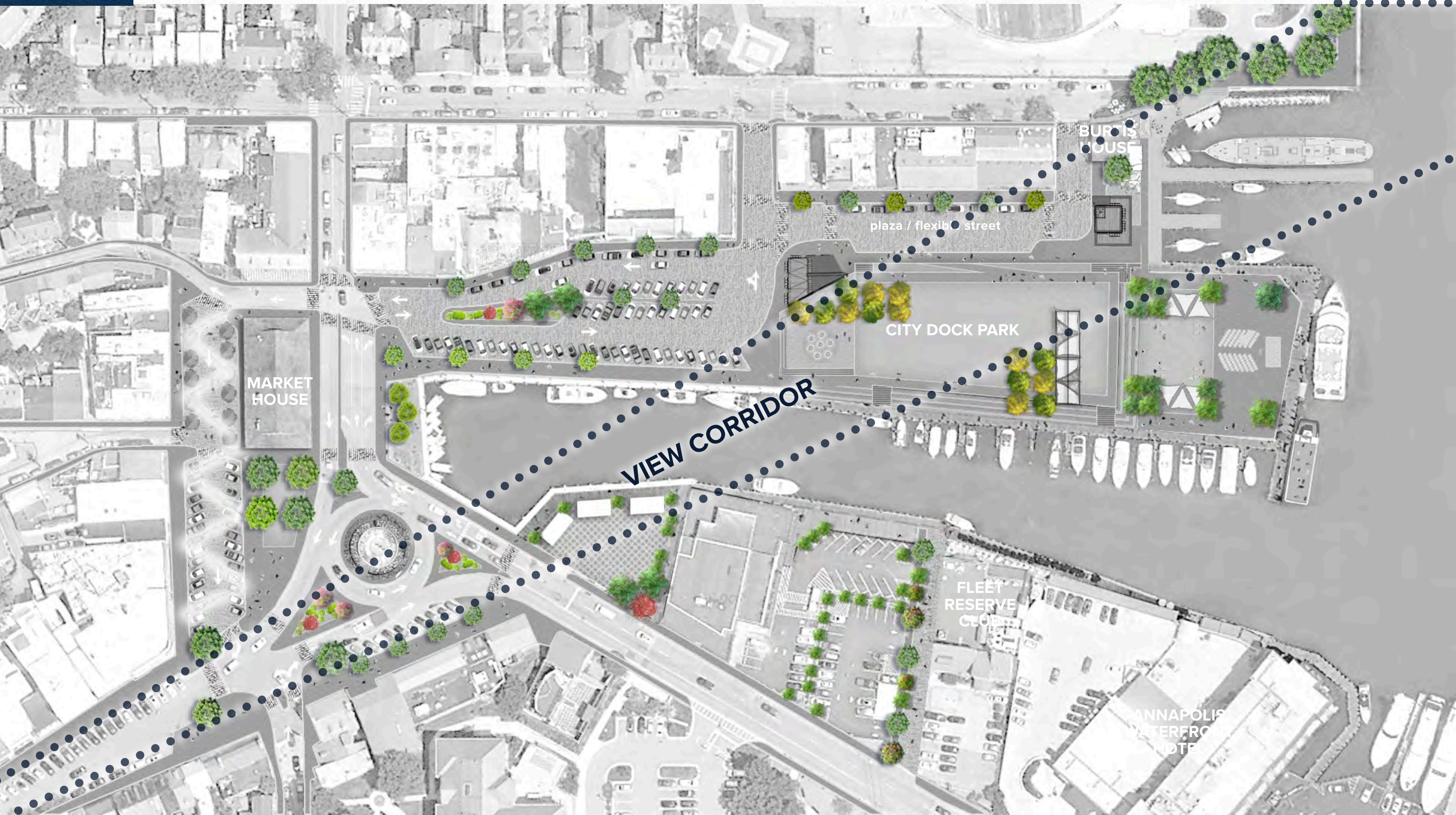
**BURTIS HOUSE**

**166 Spaces**  
**50 Spaces (110 Compromise)**  
-----  
**201 Total Spaces**

**PARK SPACE = Estimated 68,400**  
**FLEX SPACE = Estimated 57,100**

# CITY DOCK TRANSFORMATION

## CONSENSUS PLAN DIAGRAM - TREE DIAGRAM



# CITY DOCK TRANSFORMATION

EXISTING













**CITY DOCK**  
ACTION COMMITTEE

**CITY DOCK**  
REIMAGINED





# *FINANCIAL TOOLS*

.....

- **IMMEDIATE: HILLMAN GARAGE, INTERIM PARKING STRATEGY**
- **MID-RANGE: CITY DOCK REDEVELOPMENT & RESILIENCY SYSTEMS**
- **FINANCING AUTHORITY:**
  - **STATE GRANTS AUTHORITY**
  - **ANNAPOLIS/ANNE ARUNDEL COUNTY IDENTIFY FUNDING SOURCES**

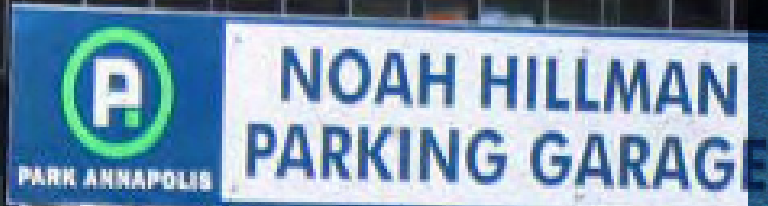


# *THRIVING LOCAL BUSINESS WORK GROUP*

.....

## **PROMOTE ALL THINGS LOCAL / ACCESSIBLE PARKING**

- FLEXIBLE SPACE FOR LOCAL MARKETS/SEASONAL EVENTS
- PRIORITY FOR PATRON PARKING



# *PARKING, BIKING, PEDESTRIAN ACCESS WORK GROUP*

.....

**1. ACCESS ESSENTIAL TO CITY DOCK'S FUTURE**

**2. NO NET LOSS: CREATE NEW 'IN KIND' PARKING**

**3. STRATEGIC APPROACH FOR OFF AND ON-STREET PARKING**

- MESSAGING: REAL-TIME PARKING
- MANAGING TRAFFIC CONGESTION
- PARKING CONSUMERS IN RIGHT LOCATION

**4. SAFE BIKE/PED. CONNECTIONS**

# THANK YOU CITY COUNCIL!

TOGETHER WE ARE MOVING THE CDAC DIRECTION/STRATEGY FORWARD



A PROUD  
PUBLIC  
SPACE

**CITY DOCK  
ACTION COMMITTEE**

*THANK YOU FOR ALL  
YOUR PARTICIPATION!*